

SPEC SHEET + MEASUREMENTS

SPORT-TEK

Sport-Tek® Tech Fleece Colorblock 1/4-Zip Hooded Sweatshirt. ST249

Product photo



Enduring color, double-knit construction and an unrestricted athletic cut define this moisture-wicking, snag-resistant staple with a matte, anti-pill finish.

- 7.1-ounce, 100% polyester
- Tag-free label
- Three-panel hood
- Contrast jersey hood lining
- Taped neck
- Reverse coil zipper
- Set-in sleeves
- Rib knit cuffs and hem
- Front pouch pocket

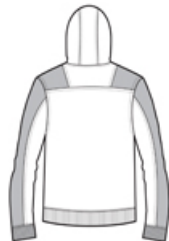
CARE INSTRUCTIONS

Machine wash color, like colors only, non-chlorine bleach, tumble dry low, remove promptly

Sketches



front



back

SPEC SHEET + MEASUREMENTS

SPORT-TEK

Sport-Tek® Tech Fleece Colorblock 1/4-Zip Hooded
Sweatshirt. ST249

PRODUCT MEASUREMENTS

	XS	S	M	L	XL	2XL	3XL	4XL
Chest	20 1/2	22	23 1/2	25	26 1/2	28	30	32
Sleeve Length	34 1/4	35	35 3/4	36 1/2	37 1/4	38	38 3/4	39 1/2
Body Length at Back	26	27	28	29	30	31	31 1/2	32

Chest: Measured across the chest one inch below armhole when laid flat.

Sleeve Length: Start at center of neck and measure down shoulder, down sleeve to hem.

Body Length at Back: Measured from high point shoulder to finished hem at back.

SIZE CHARTS

	XS	S	M	L	XL	2XL	3XL	4XL
Chest	32-34	35-37	38-40	41-43	44-46	47-49	50-52	53-55

HOW TO MEASURE



CHEST

Measure under the arm and around the fullest part of the chest with arms down, keeping tape horizontal.

SPEC SHEET + MEASUREMENTS



Sport-Tek® Tech Fleece Colorblock 1/4-Zip Hooded
Sweatshirt. ST249

COLORS

Please note: PMS code information is shown only when an exact match is available.



Graphite
Heather/
Black
PMS BLACK
C



Graphite
Heather/
Forest Green
PMS 553C



Graphite
Heather/
Maroon
PMS 504C



Graphite
Heather/ True
Navy
PMS 533C



Graphite
Heather/ True
Red
PMS 200C



Graphite
Heather/ True
Royal
PMS COOL
GRAY 11C