

SPEC SHEET + MEASUREMENTS

PORT AUTHORITY.

Port Authority® R-Tek® Pro Fleece Full-Zip Vest. F228

Product photo



R-Tek® Pro vests are made for warmth and layering--without adding extra bulk--thanks to stretch side panels. Produced using Low Impact Technology (L.I.T.™) which uses less dyestuffs, thermal energy and water for enhanced softness, performance and after-care quality.

- 7.1-ounce, 100% polyester R-Tek® Pro fleece
- 88/12 poly/spandex side panels
- Reverse coil zipper
- Chin guard
- Zippered chest pocket
- Front zippered pockets with zipper garages
- Stretch binding at armholes and hem

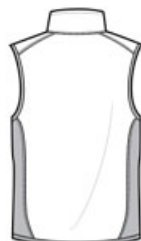
CARE INSTRUCTIONS

Machine wash cold. Gentle cycle with like colors. Non-chlorine bleach when needed. Tumble dry low. Remove promptly. Do not iron.

Sketches



front



back

SPEC SHEET + MEASUREMENTS

PORT AUTHORITY

Port Authority® R-Tek® Pro Fleece Full-Zip Vest. F228

PRODUCT MEASUREMENTS

	XS	S	M	L	XL	2XL	3XL	4XL
Chest	19 1/4	20 3/4	22 1/4	23 3/4	25 1/4	26 3/4	28 3/4	30 3/4
Body Length at Back	27 1/2	28	28 1/2	29	30	31	31 1/2	32

Chest: Measured across the chest one inch below armhole when laid flat.

Body Length at Back: Measured from high point shoulder to finished hem at back.

SIZE CHARTS

	XS	S	M	L	XL	2XL	3XL	4XL
Chest	32-34	35-37	38-40	41-43	44-46	47-49	50-53	54-57

HOW TO MEASURE



CHEST

Measure under the arm and around the fullest part of the chest with arms down, keeping tape horizontal.

SPEC SHEET + MEASUREMENTS

PORT AUTHORITY

Port Authority® R-Tek® Pro Fleece Full-Zip Vest. F228

COLORS

Please note: PMS code information is shown only when an exact match is available.



Black/ Black
PMS BLACK
C



Charcoal
Heather/
Black
PMS 426C



Navy Heather/
Black
PMS 533C