

SPEC SHEET + MEASUREMENTS



OGIO® Flux 1/4-Zip. OG823

Product photo



This easy-to-layer piece has a clean, modern OGIO look with jacquard side panels for modern style.

- 9.7-ounce, 96/4 poly/cotton knit shell
- 9.7-ounce, 96/4 poly/cotton jacquard knit insets
- Locking reverse coil zipper
- Forward shoulders
- Jacquard knit insets on shoulders and side panels
- Zippered pockets
- Jacquard knit back panel that rolls forward to the forward shoulder
- Black reflective welding detail on back
- Black reflective O heat transfer on front left hem

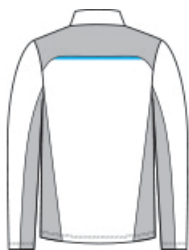
CARE INSTRUCTIONS

Machine Wash Cold Gentle Cycle With Like Colors. Only Non-Chlorine Bleach When Needed. Tumble Dry Low. Cool Iron If Necessary. Do Not Dry Clean.

Sketches



front



back

SPEC SHEET + MEASUREMENTS



OGIO® Flux 1/4-Zip. OG823

PRODUCT MEASUREMENTS

	XS	S	M	L	XL	2XL	3XL	4XL
Body Length at Back	26 1/2	27 1/2	28 1/2	29 1/2	30 1/2	31 1/2	32	32 1/2
Chest	18	19 1/2	21	22 1/2	24	25 1/2	27 1/2	29 1/2
Sleeve Length from Center Back	34 3/4	35 1/2	36 1/4	37	37 3/4	38 1/2	39 1/4	40

Body Length at Back: Measured from high point shoulder to finished hem at back.

Chest: Measured across the chest one inch below armhole when laid flat.

Sleeve Length from Center Back: Measure from Center Back neck to shoulder point to sleeve hem.

SIZE CHARTS

	XS	S	M	L	XL	2XL	3XL	4XL
Chest	32-34	35-37	38-40	41-43	44-46	47-49	50-53	54-57

SPEC SHEET + MEASUREMENTS



OGIO® Flux 1/4-Zip. OG823

HOW TO MEASURE



CHEST

Measure under the arm and around the fullest part of the chest with arms down, keeping tape horizontal.

COLORS

Please note: PMS code information is shown only when an exact match is available.



Blacktop
Heather
PMS BLACK
C



Tarmac Grey
Heather
PMS 7540C