

SPEC SHEET + MEASUREMENTS

PORT AUTHORITY

Port Authority® Women's All-Season II Jacket. L304

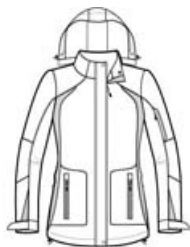
Product photo



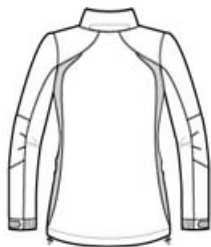
Our All-Season II Jacket is water-repellent and critically seam sealed. Colorblock panels at the sides and sleeves give it year-round appeal.

- 100% Taslan nylon shell
- 4.7-ounce, 100% microfleece body lining
- 100% polyester sleeve lining for easy on/off
- 3000MM fabric waterproof rating
- Critically seam-sealed for added waterproof protection
- 3000G/M² fabric breathability rating
- Zip-off hood
- Full-length exterior storm flap with hook and loop closure
- Two-way zipper
- Interior pocket
- Interior zippered pocket
- Articulated elbows for greater mobility
- Left sleeve zippered pocket
- Port Pocket™ for decoration access
- Adjustable self-fabric tab cuffs with hook and loop closures
- Front zippered pockets
- Drop tail hem with drawcord and toggles for adjustability

Sketches



front



back

CARE INSTRUCTIONS

Machine wash cold with like colors. Only non-chlorine bleach when needed. Tumble dry low. Cool iron if needed. Do not dry clean.

SPEC SHEET + MEASUREMENTS

PORT AUTHORITY

Port Authority® Women's All-Season II Jacket. L304

PRODUCT MEASUREMENTS

	XS	S	M	L	XL	XXL	3XL	4XL
Bust	20 1/4	21 1/4	22 1/4	23 1/4	24 1/4	25 1/4	26 3/4	28 1/4
Body Length at Front	27	27 1/2	28	29	30	31	31 1/2	32
Sleeve Length	32 1/2	33	33 1/2	34 1/8	34 3/4	35 3/8	36 1/8	36 7/8
Body Length at Back	27	27 1/2	28	29	30	31	31 1/2	32

Bust: Measured across the chest one inch below armhole when laid flat.

Body Length at Front: Measure from high point shoulder to lowest point of hem at front.

Sleeve Length: Start at center of neck and measure down shoulder, down sleeve to hem.

Body Length at Back: Measured from high point shoulder to finished hem at back.

SIZE CHARTS

	XS	S	M	L	XL	XXL	3XL	4XL
Size	2	4/6	8/10	12/14	16/18	20/22	24/26	28/30
Bust	32-34	35-36	37-38	39-41	42-44	45-47	48-51	52-55

SPEC SHEET + MEASUREMENTS

PORT AUTHORITY.

Port Authority® Women's All-Season II Jacket. L304

HOW TO MEASURE



BUST

Measure under the arm and around the fullest part of the bust with arms down, keeping tape horizontal.

COLORS

Please note: PMS code information is shown only when an exact match is available.



Black/ Black
PMS BLACK
C



Snorkel Blue/
Black
PMS 2145C



True Navy/
Iron Grey
PMS 533C