

# SPEC SHEET + MEASUREMENTS

*Brooks Brothers*

Brooks Brothers® Women's Casual Oxford Cloth Shirt.

BB18005

## Product photo



Originally invented in 1900, this iconic silhouette embodies the off-duty professional look whether you dress it up or keep it casual.

- 5-ounce, 100% cotton oxford
- Garment-washed
- Button-down collar
- Button at center back collar
- Box pleat and locker loop at back yoke
- Pearlized buttons with Brooks Brothers logo
- Gussets at side seam
- Rounded, adjustable cuffs

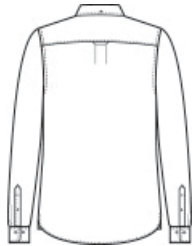
## CARE INSTRUCTIONS

Machine Wash Cold With Like Colors. Do Not Bleach. Tumble Dry Low. Remove Promptly. Cool Iron If Necessary.

## Sketches



front



back

# SPEC SHEET + MEASUREMENTS

*Brooks Brothers*

Brooks Brothers® Women's Casual Oxford Cloth Shirt.  
BB18005

## PRODUCT MEASUREMENTS

	XS	S	M	L	XL	2XL	3XL	4XL
Size	2	4/6	8/10	12/14	16/18	20/22	24/26	28/30
Body Length at Back	26 1/2	27	27 1/2	28	28 1/2	29	29 1/2	30
Bust	19 1/2	20 1/2	21 1/2	23	24 1/2	26	28	30
Sleeve Length from Center Back	32	32 1/2	33	33 5/8	34 1/4	34 7/8	35 1/4	35 5/8

**Body Length at Back:** Measured from high point shoulder to finished hem at back.

**Bust:** Measured across the chest one inch below armhole when laid flat.

**Sleeve Length from Center Back:** Measure from Center Back neck to shoulder point to sleeve hem.

## SIZE CHARTS

	XS	S	M	L	XL	2XL	3XL	4XL
Size	2	4/6	8/10	12/14	16/18	20/22	24/26	28/30
Bust	32-34	35-36	37-38	39-41	42-44	45-47	48-51	52-55

# SPEC SHEET + MEASUREMENTS

*Brooks Brothers*

Brooks Brothers® Women's Casual Oxford Cloth Shirt.  
BB18005

## HOW TO MEASURE

---



### **BUST**

Measure under the arm and around the fullest part of the bust with arms down, keeping tape horizontal.

## COLORS

---

Please note: PMS code information is shown only when an exact match is available.



Newport Blue  
PMS 7681C



Soft Mint



Soft Pink  
PMS 2050C



White



Windsor Grey