

# SPEC SHEET + MEASUREMENTS

*Brooks Brothers*

Brooks Brothers® Cotton Stretch 1/4-Zip Sweater.

BB18402

## Product photo



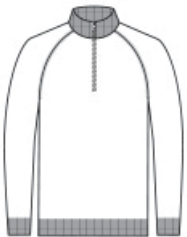
With a classic look and a comfortable fit, this sweater is sure to be a favorite throw-on-and-go option for any event.

- 70/30 pima cotton/nylon
- Full-fashioned throughout
- 1x1 rib neck, cuffs and hem
- 1/4-zip cadet collar
- Fully fashioned raglan sleeves
- Antique silver zipper pull with Brooks Brothers logo

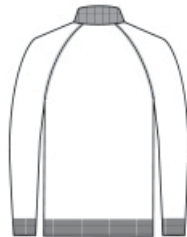
## CARE INSTRUCTIONS

Machine Wash Cold With Like Colors. Gentle Cycle. Only Non-Chlorine Bleach When Needed. Reshape And Lay Flat To Dry. Cool Iron If Necessary.

## Sketches



front



back

# SPEC SHEET + MEASUREMENTS

*Brooks Brothers*

Brooks Brothers® Cotton Stretch 1/4-Zip Sweater.  
BB18402

## PRODUCT MEASUREMENTS

	XS	S	M	L	XL	2XL	3XL	4XL
Body Length at Back	26 1/2	27	27 1/2	28	28 1/2	29	29 1/2	30
Chest	18 1/2	20	21 1/2	23	25	27	29 1/2	32 1/2
Raglans and Dolmans Sleeve Length	32 3/4	33 1/2	34 1/4	35	35 3/4	36 1/2	37 1/4	38

**Body Length at Back:** Measured from high point shoulder to finished hem at back.

**Chest:** Measured across the chest one inch below armhole when laid flat.

**Raglans and Dolmans Sleeve Length:** Measure from neck edge to finished hem.

## SIZE CHARTS

	XS	S	M	L	XL	2XL	3XL	4XL
Chest	32-34	35-37	38-40	41-43	44-47	48-51	52-56	57-61

# SPEC SHEET + MEASUREMENTS

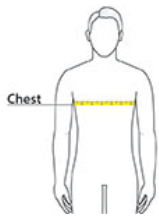
*Brooks Brothers*

Brooks Brothers® Cotton Stretch 1/4-Zip Sweater.

BB18402

## HOW TO MEASURE

---



### CHEST

Measure under the arm and around the fullest part of the chest with arms down, keeping tape horizontal.

## COLORS

---

Please note: PMS code information is shown only when an exact match is available.



Charter Blue  
Heather  
PMS 7684C



Deep Black  
PMS BLACK  
C



Light Shadow  
Grey Heather



Navy Blazer  
PMS 533C