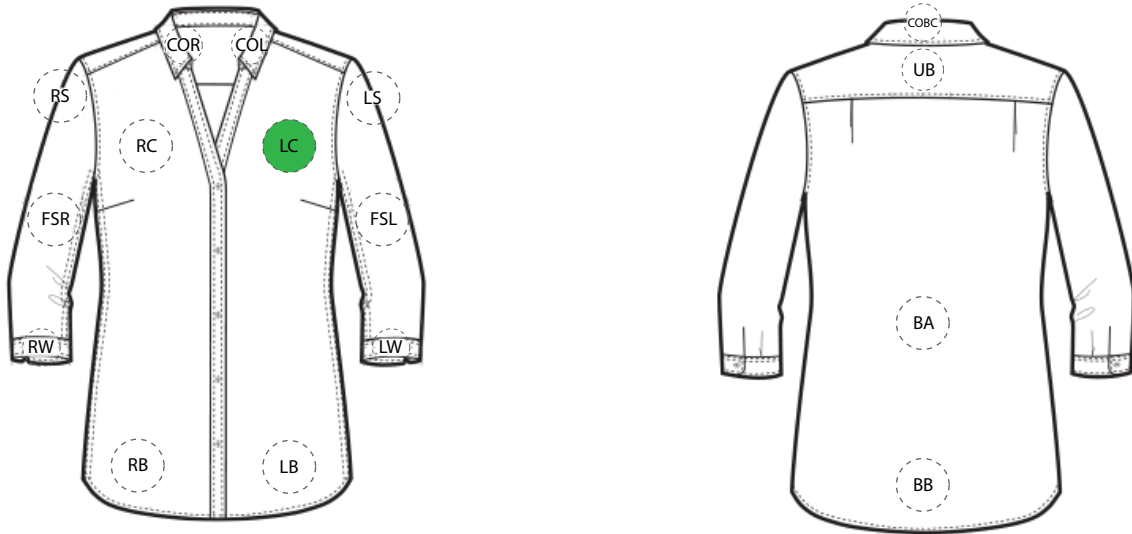


# DECORATION SPEC SHEET



## FRONT DECORATION DIMENSIONS

<b>COL</b>	Collar Left	1" Diameter	
<b>COR</b>	Collar Right	1" Diameter	
<b>LB</b>	Left Bottom	3 1/2" Diameter	
<b>LC</b>	Left Chest	3 1/2" Diameter	Primary
<b>RB</b>	Right Bottom	3 1/2" Diameter	
<b>RC</b>	Right Chest	3 1/2" Diameter	

## BACK DECORATION DIMENSIONS

<b>BA</b>	Back	3 1/2" Diameter	
<b>BB</b>	Back Bottom	3 1/2" Diameter	
<b>COBC</b>	Collar Back	1" Diameter	
<b>UB</b>	Upper Back	2" Diameter	

## SLEEVE DECORATION DIMENSIONS

<b>FSL</b>	Full Sleeve Left	3 1/2" Diameter	
<b>FSR</b>	Full Sleeve Right	3 1/2" Diameter	
<b>LS</b>	Left Shoulder	3 1/2" Diameter	
<b>RS</b>	Right Shoulder	3 1/2" Diameter	
<b>LW</b>	Left Shoulder	1" Diameter	
<b>RW</b>	Right Shoulder	1" Diameter	

Decoration range is dependent on product, decoration method and equipment used. Allow for 1/8" per size.

The information provided in this template is general, but the printing or embroidery placements may vary depending on the product, due to brand logo placement, fabric types, etc.